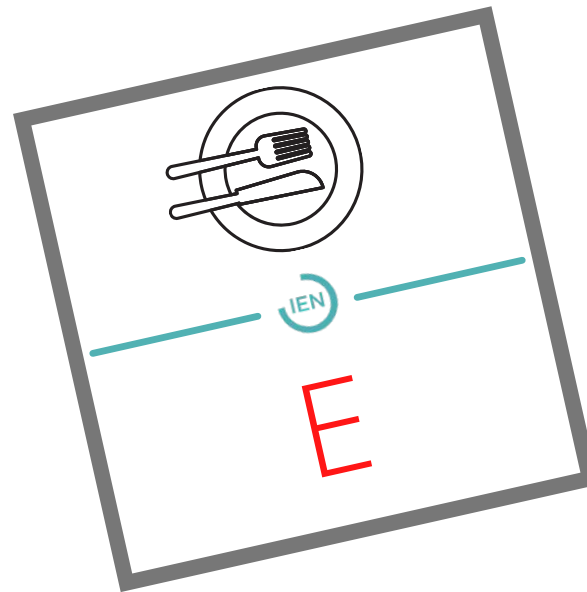
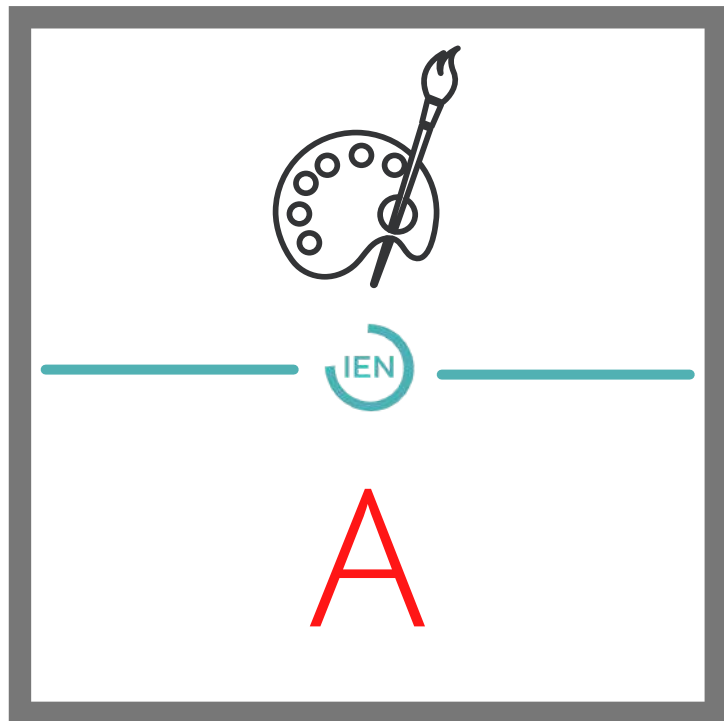
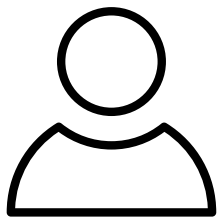


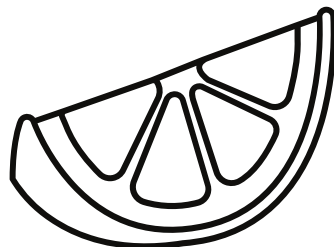
MATERIAL DE ESTIMULACIÓN COGNITIVA

ENCUENTRA UNA PALABRA





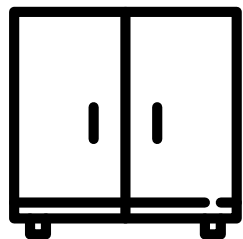
NOMBRE



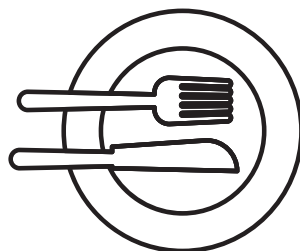
FRUTA



PAÍS / CIUDAD



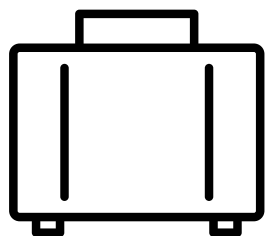
MUEBLE



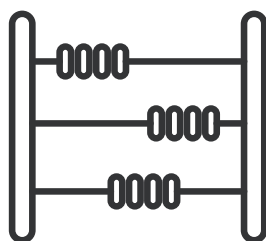
COMIDA



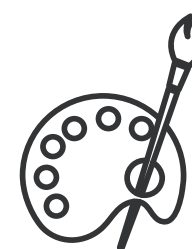
DEPORTE



TRABAJO



OBJETO



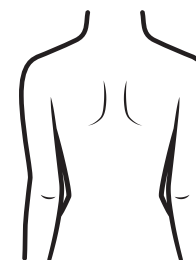
COLOR



ANIMAL



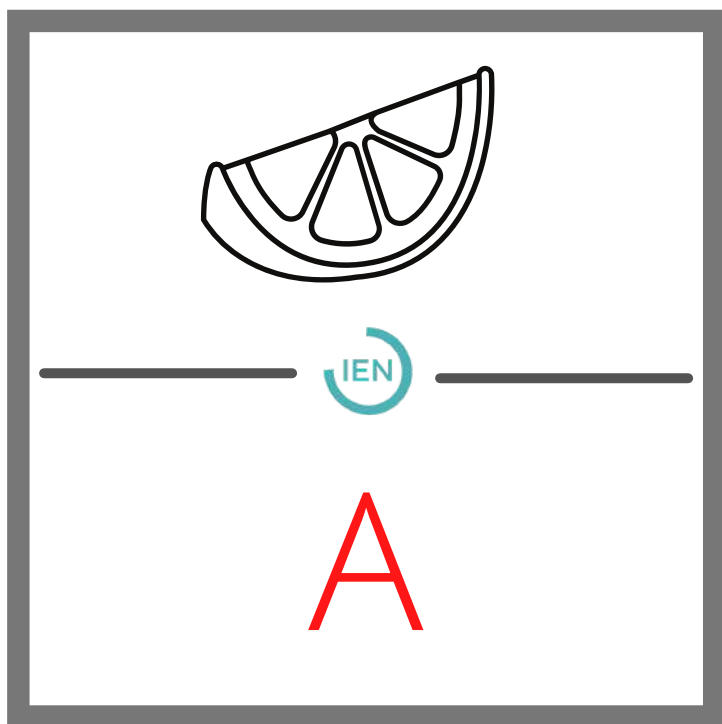
INSTRUMENTO
MUSICAL



PARTE DEL
CUERPO

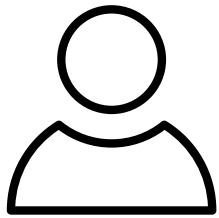
FIGURA: INDICA QUE LA PALABRA DEBE PERTENECER A ESA CATEGORÍA

LETRA EN ROJO: INDICA QUE LA PALABRA NO PUEDE CONTENER ESA LETRA



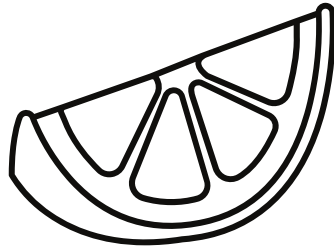
FRUTA QUE NO CONTENGA LA LETRA **A**

EJEMPLO: **MELÓN** (NO TIENE **A**)



IEN

A



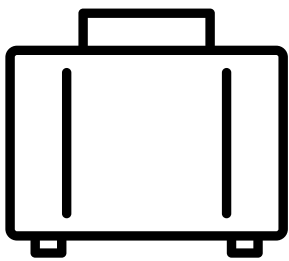
IEN

A



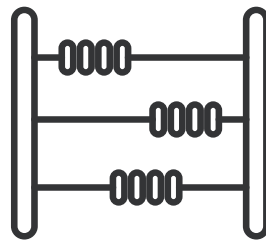
IEN

A



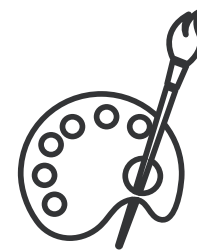
IEN

A



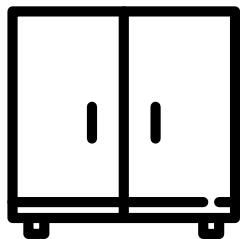
IEN

A



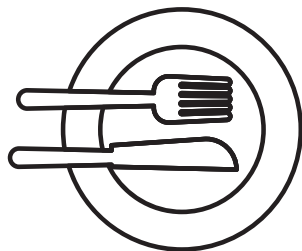
IEN

A



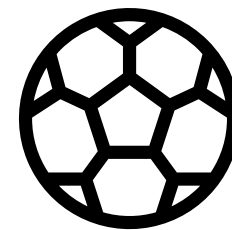
IEN

A



IEN

A



IEN

A



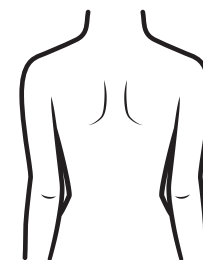
IEN

A



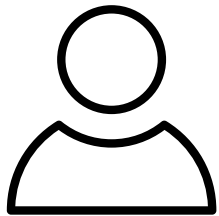
IEN

A

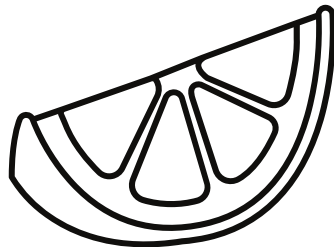


IEN

A



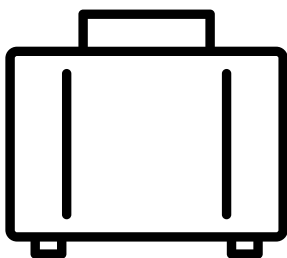
E



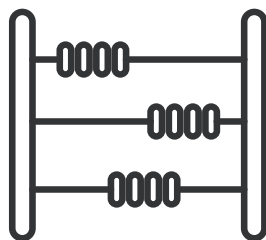
E



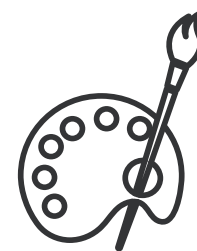
E



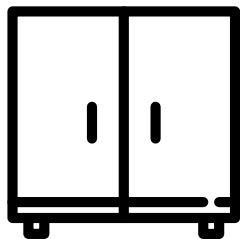
E



E

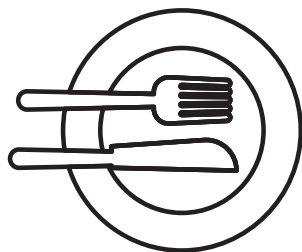


E



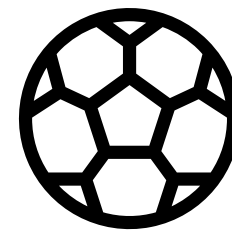
IEN

E



IEN

E



IEN

E



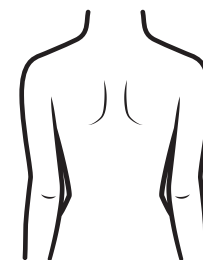
IEN

E



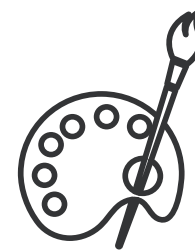
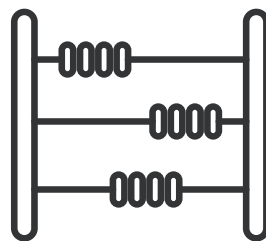
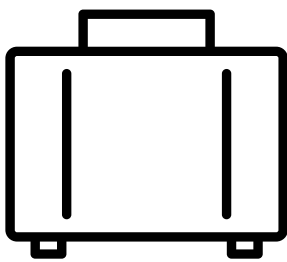
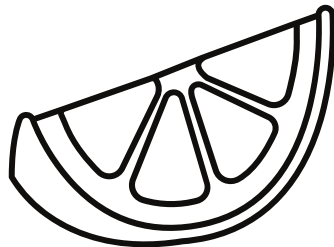
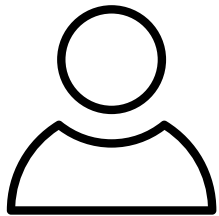
IEN

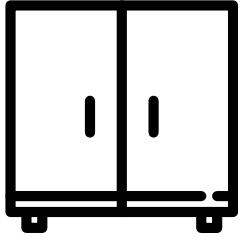
E



IEN

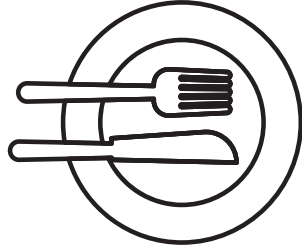
E





IEN

|



IEN

|



IEN

|



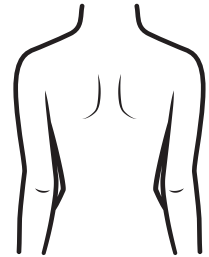
IEN

|



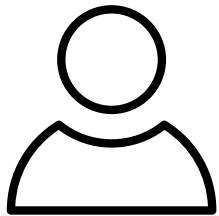
IEN

|

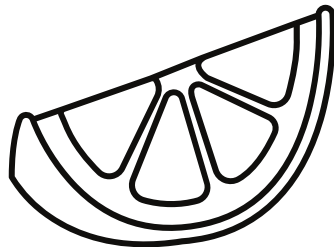
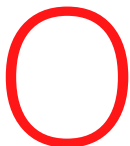


IEN

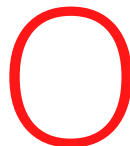
|



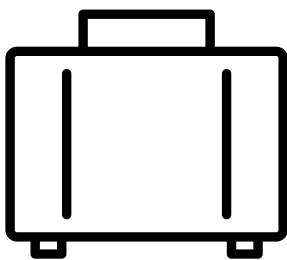
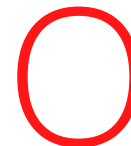
IEN



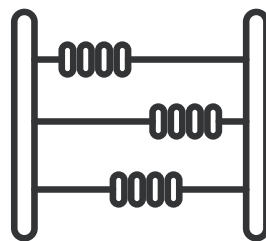
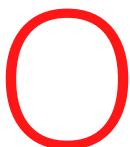
IEN



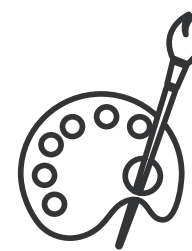
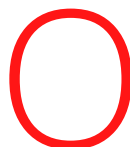
IEN



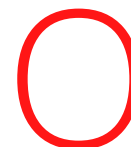
IEN

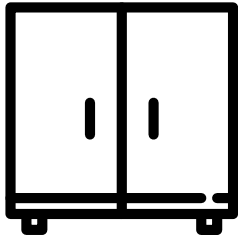


IEN

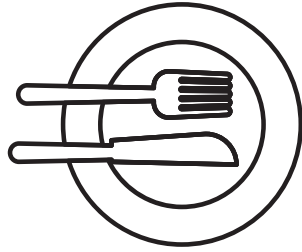
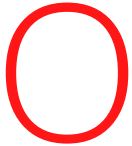


IEN

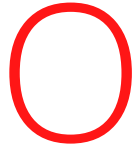




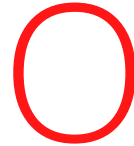
IEN



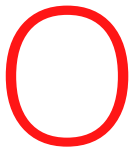
IEN



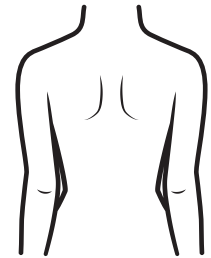
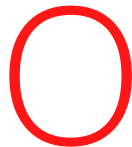
IEN



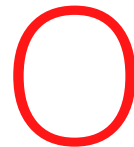
IEN

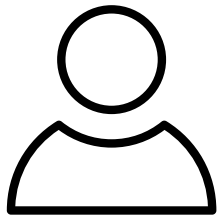


IEN



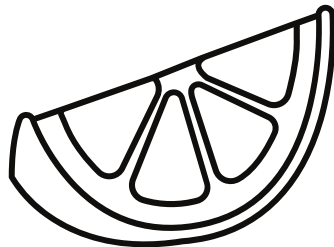
IEN





IEN

U



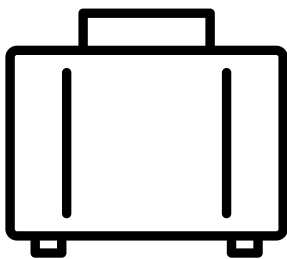
IEN

U



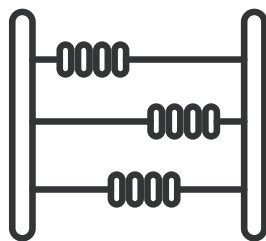
IEN

U



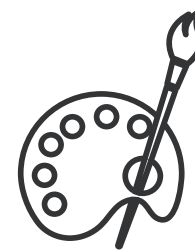
IEN

U



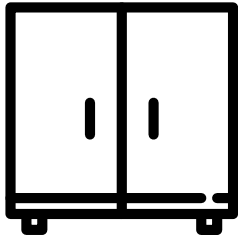
IEN

U



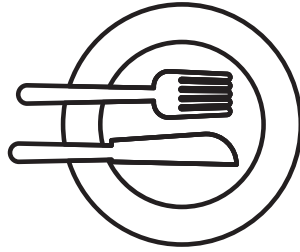
IEN

U



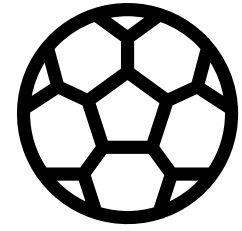
IEN

U



IEN

U



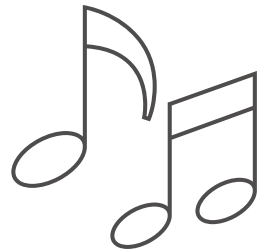
IEN

U



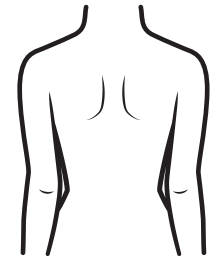
IEN

U



IEN

U



IEN

U